

SSM Course 2023-24

Value Function Approximation in  
Reinforcement Learning

Mirco Musolesi

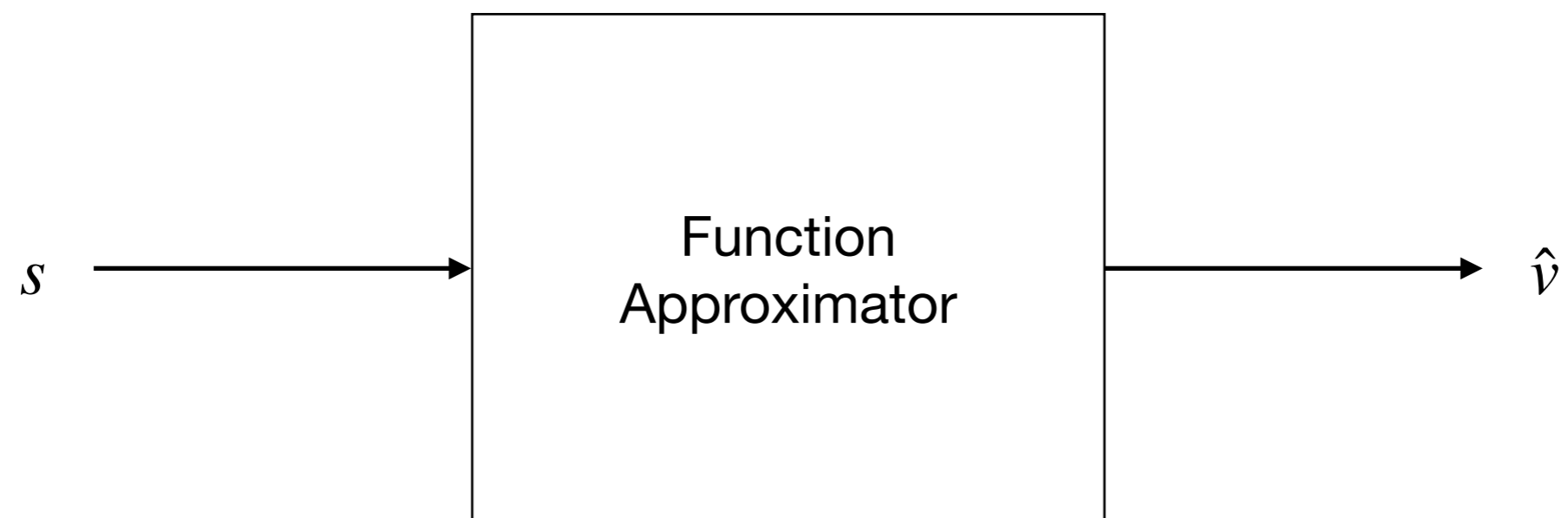
[mircomusolesi@acm.org](mailto:mircomusolesi@acm.org)

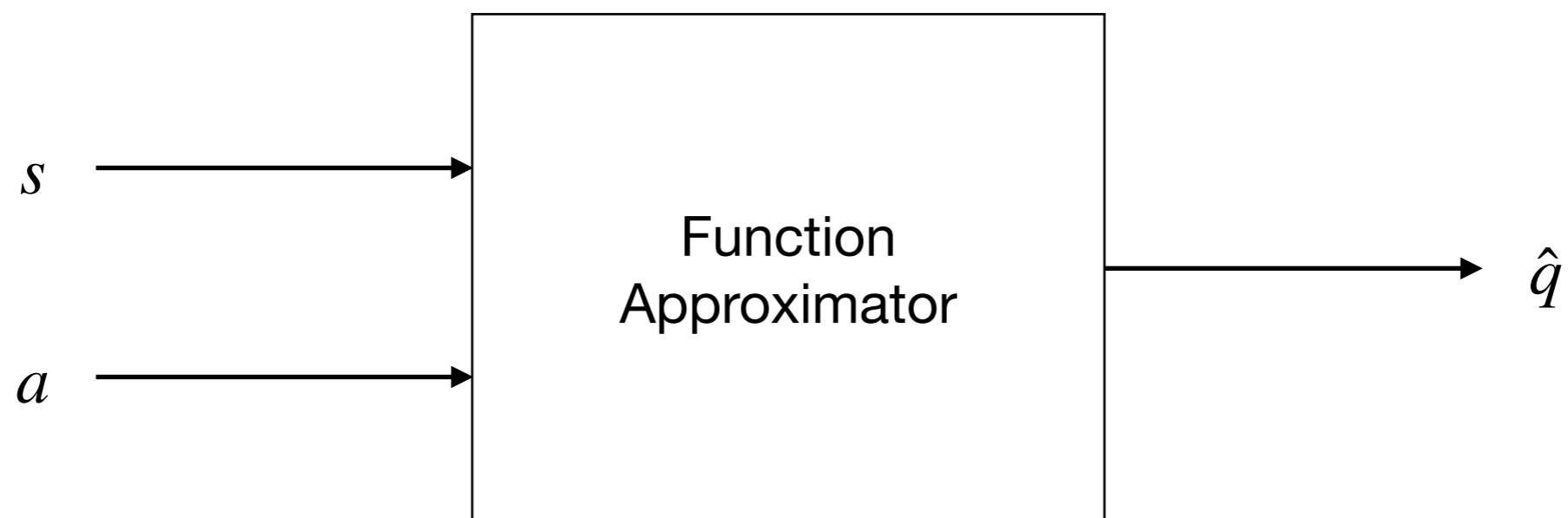
# Recap: What is Wrong with Tabular Methods

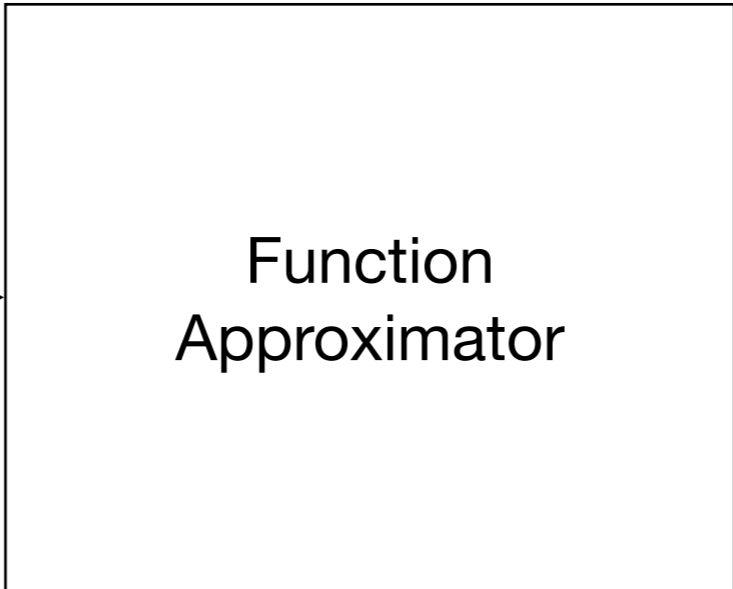
- ▶ Tabular methods suffer from a series of drawbacks:
  - ▶ Table with 1 row per state-action entry.
    - ▶ What happens if you can't fit all the state-action entry in a table?
    - ▶ We need *function approximation* rather than tables.

# Alternative: Function Approximation

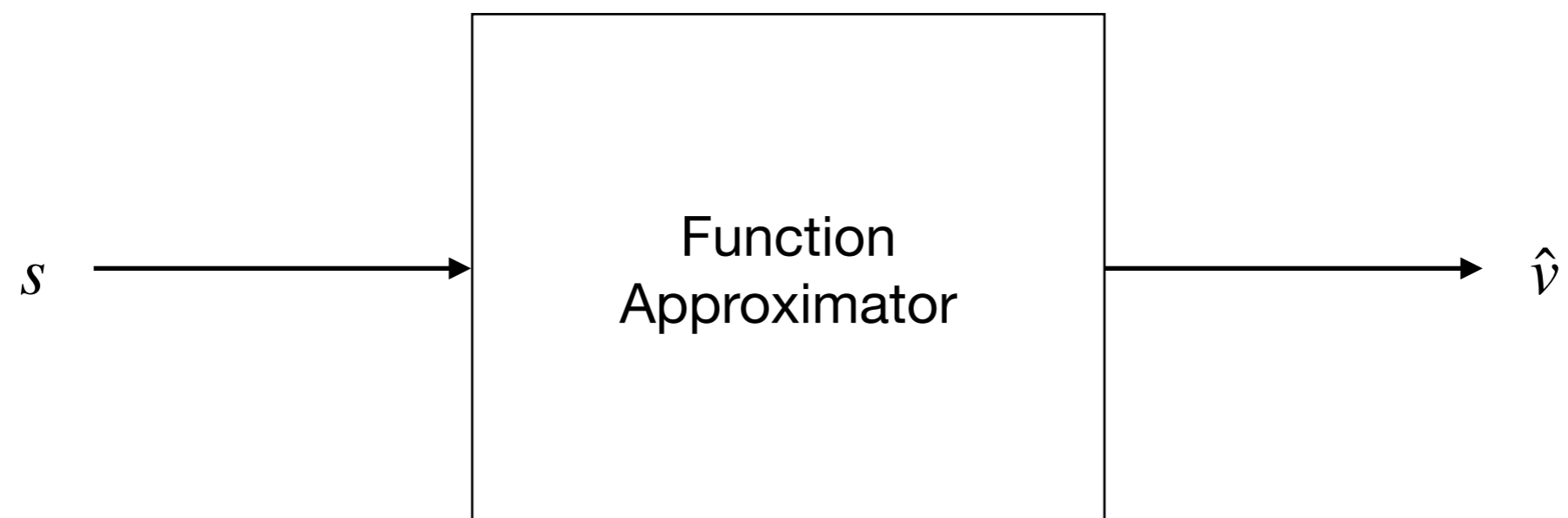
- ▶ Function Approximation will provide a mapping between a state or state-action to a value function.
- ▶ Recall: a value-function approximation is a function, with the state (or the state and action) as input, which gives in output the value function for the state (or the state and action).

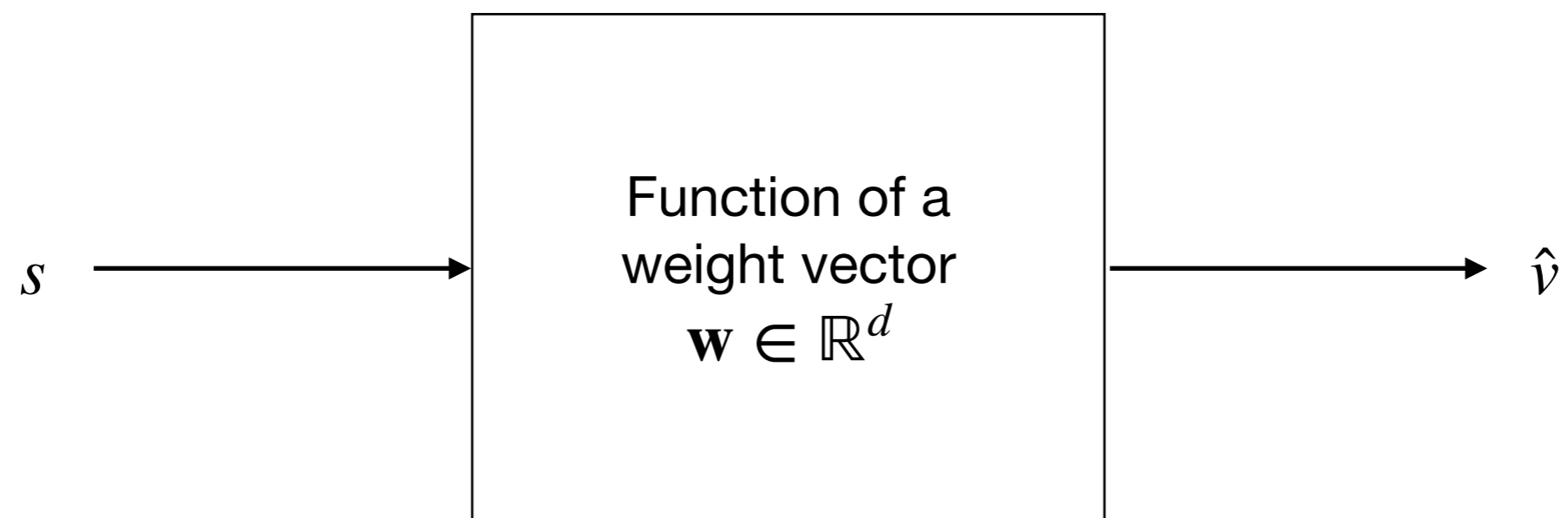






$\hat{q}$







# Approximation Methods

- ▶ In this lecture we will focus on the study of function approximation for estimating state-value functions.
- ▶ In particular, we will consider an approach where the approximate value function is represented not as a table but as a parametrised functional form with weight vector  $w \in \mathbb{R}^d$ .
- ▶ We will start by considering how to approximate  $v_\pi$  from experience generated using a policy  $\pi$ .



# Number of Moves in Go

Board size $n \times n$	$3^{n^2}$	Percentage of Legal Positions	Number of Legal Positions
1×1	3	33.33%	1
2×2	81	70.37%	57
3×3	19,683	64.40%	12,675
4×4	43,046,721	56.49%	24,318,165
5×5	847,288,609,443	48.90%	414,295,148,741
9×9	$4.43426488243 \times 10^{38}$	23.44%	$1.03919148791 \times 10^{38}$
13×13	$4.30023359390 \times 10^{80}$	8.66%	$3.72497923077 \times 10^{79}$
19×19	$1.74089650659 \times 10^{172}$	1.20%	$2.08168199382 \times 10^{170}$

Data from Wikimedia and the On-line Encyclopedia of Integer Sequences (see A094777)

# Combinatorics of Go

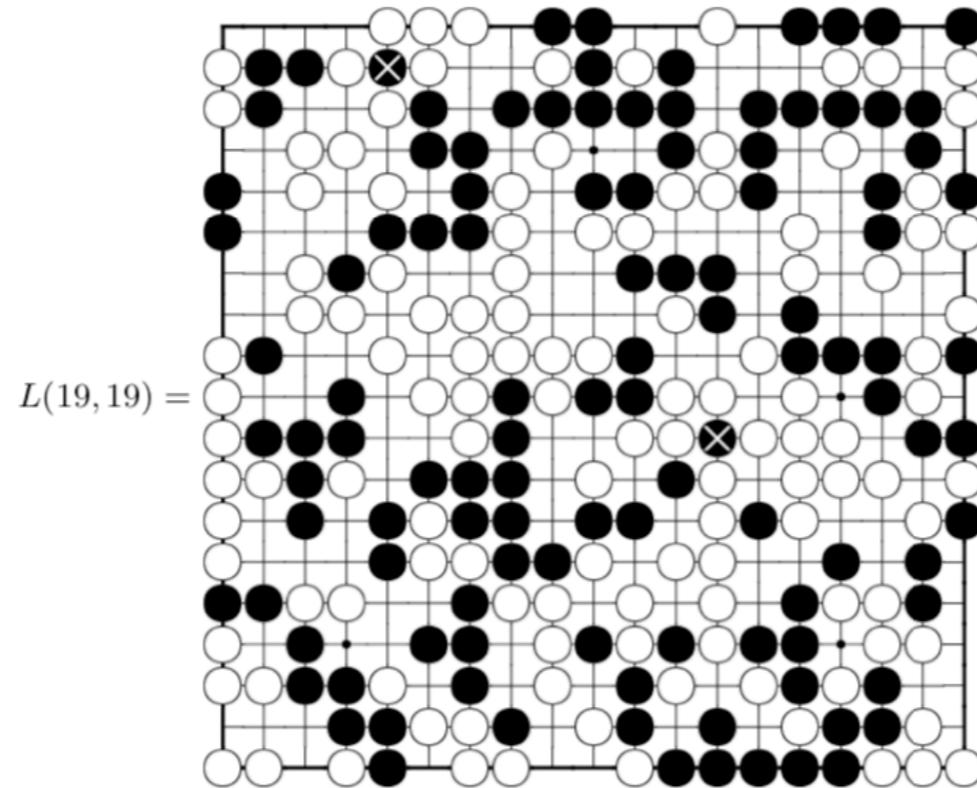
John Tromp

Gunnar Farneback

January 31, 2016

## Abstract

We present several results concerning the number of positions and games of Go. We derive recurrences for  $L(m, n)$ , the number of legal positions on an  $m \times n$  board, and develop a dynamic programming algorithm which computes  $L(m, n)$  in time  $O(m^3 n^2 \lambda^m)$  and space  $O(m \lambda^m)$ , for some constant  $\lambda < 5.4$ . We used this to compute  $L(n, n)$  up to the standard board size  $n = 19$ . In ternary (mapping 0,1,2 to empty,black,white)



For even larger boards, we prove existence of a *base of liberties*

$$L = \lim_{m, n \rightarrow \infty} \sqrt[mn]{L(m, n)} = 2.975734192043357249381 \dots$$

Based on a conjecture about vanishing error-terms, we derive an asymptotic formula for  $L(m, n)$ , which is shown to be highly accurate.

0 1 3 6 2 7  
: OE 13  
: IS 20  
23 IS 12  
10 22 11 21

# THE ON-LINE ENCYCLOPEDIA OF INTEGER SEQUENCES<sup>®</sup>

founded in 1964 by N. J. A. Sloane

[Hints](#)

(Greetings from [The On-Line Encyclopedia of Integer Sequences!](#))

A094777	Number of legal positions in Go played on an $n \times n$ grid (each group must have at least one liberty).	8
	1, 57, 12675, 24318165, 414295148741, 62567386502084877, 83677847847984287628595, 990966953618170260281935463385, 103919148791293834318983090438798793469, 96498428501909654589630887978835098088148177857, 793474866816582266820936671790189132321673383112185151899, 57774258489513238998237970307483999327287210756991189655942651331169, 37249792307686396442294904767024517674249157948208717533254799550970595875237705, 212667732900366224249789357650440598098805861083269127196623872213228196352455447575029701325	
	<a href="#">(list; graph; refs; listen; history; text; internal format)</a>	
OFFSET	1,2	
COMMENTS	John Tromp wrote a small C program to compute the number for boards up to size $4 \times 5$ , given in the rec.games.go posting below. Gunnar Farnebaeck (gunnar(AT)lysator.liu.se) wrote a pike script to compute the number by dynamic programming, which handles sizes up to $12 \times 12$ (available upon request).	
LINKS	John Tromp, <a href="#">Table of <math>n</math>, <math>a(n)</math> for <math>n = 1..19</math></a> British Go Association, <a href="#">Go</a> Sandy Harris, <a href="#">Number of Possible Outcomes of a Game</a> John Tromp, <a href="#">Complexity of Chess and Go</a> John Tromp, <a href="#">Number of legal Go positions</a> John Tromp and Gunnar Farnebaeck, <a href="#">Combinatorics of Go</a> (2016)	
FORMULA	$3^{(n*n)}$ is a trivial upper bound. Tromp & Farnebaeck prove that $a(n) = (1 + o(1)) * L^{(n^2)}$ , and conjecture that $a(n) \sim A * B^{(2n)} * L^{(n^2)} * (1 + O(n*p^n))$ for some constants $A$ , $B$ , $L$ , and $p < 1$ . - <a href="#">Charles R Greathouse IV</a> , Feb 08 2016	
EXAMPLE	The illegal $2 \times 2$ positions are the $2^4$ with no empty points and the $4*2$ having a stone adjacent to 2 opponent stones that share a liberty. That leaves $3^4 - 16 - 8 = 57$ legal positions.	
CROSSREFS	Sequence in context: <a href="#">A219077</a> <a href="#">A091749</a> <a href="#">A218425</a> * <a href="#">A218662</a> <a href="#">A331015</a> <a href="#">A093257</a> Adjacent sequences: <a href="#">A094774</a> <a href="#">A094775</a> <a href="#">A094776</a> * <a href="#">A094778</a> <a href="#">A094779</a> <a href="#">A094780</a>	
KEYWORD	nonn	
AUTHOR	<a href="#">Jan Kristian Haugland</a> , Jun 09 2004	
EXTENSIONS	More terms from <a href="#">John Tromp</a> , Jan 27 2005 $a(10)$ - $a(13)$ from <a href="#">John Tromp</a> , Jun 23 2005 $a(14)$ - $a(15)$ from <a href="#">John Tromp</a> , Sep 01 2005. $a(16)$ from <a href="#">John Tromp</a> , Oct 06 2005 Michal Koucky should be credited for carrying most of the computational load for computing the $n=14$ , 15 and 16 results with his file-based implementation. $a(17)$ - $a(18)$ from <a href="#">John Tromp</a> , Mar 08 2015 $a(19)$ from <a href="#">John Tromp</a> , Jan 21 2016	

# Approximation Methods

- ▶ We will write  $\hat{v}(s, \mathbf{w}) \approx v_{\pi}(s)$  for the approximate value of state  $s$  given weight vector  $\mathbf{w}$ .
- ▶  $\hat{v}$  in theory might be a linear function of the weights  $\mathbf{w}$ , but more generally it can be a non-linear function.
- ▶ A widely used technique is to use a multi-layer artificial neural network to compute  $\hat{v}$ , with  $\mathbf{w}$  the vector of the connection weights in all the layers.
  - ▶ By adjusting the values of the weights  $\mathbf{w}$  a different range of functions can be computed by the network.
  - ▶ Typically, the number of weights  $\mathbf{w}$  is much less than the number of states ( $d \ll |\mathcal{S}|$ ) where  $|\mathcal{S}|$  is the cardinality of the states of the system under consideration.

# Approximation Methods

- ▶ There are various interesting aspects that need to be considered:
  - ▶ Function approximation can be used also for partially observable problems.
  - ▶ With an approximation, we might build a function that does not depend on certain aspects of the state and we can just build a function assuming that they are not observable.

# Value Function Approximation

- ▶ Classic methods are based on the idea of an update “towards” an (update) target. For example:
  - ▶ In the Monte Carlo method the update target for the value prediction is  $G_t$ .
  - ▶ In the TD(0) the update target is  $R_{t+1} + \gamma \hat{v}(S_{t+1}, \mathbf{w}_t)$ .
- ▶ In classic methods, what we do is to change the current estimation value “towards” the update.
- ▶ The estimation of value function approximation is different:
  - ▶ Very complex methods are possible.
  - ▶ We will use supervised learning (i.e., we will learn through sets of inputs-outputs).
    - ▶ Since we are trying to learn how to link the inputs to real values we can this as a function approximation problem.



# Nonlinear Function Approximation: Artificial Neural Networks

- ▶ Artificial neural networks (ANN) are widely used for nonlinear function approximation.
- ▶ We have results that guarantees that an ANN with a single hidden layer containing a large enough finite number of sigmoid units can approximate any continuous function on a compact region of the network's input space to any degree of accuracy (see Cybenko 1989).
- ▶ Nowadays, we tend to use networks with more than one hidden layer (we usually use the term deep learning for that reason).
- ▶ Learning is based on stochastic gradient descent.

## Approximation by Superpositions of a Sigmoidal Function\*

G. Cybenko†

**Abstract.** In this paper we demonstrate that finite linear combinations of compositions of a fixed, univariate function and a set of affine functionals can uniformly approximate any continuous function of  $n$  real variables with support in the unit hypercube; only mild conditions are imposed on the univariate function. Our results settle an open question about representability in the class of single hidden layer neural networks. In particular, we show that arbitrary decision regions can be arbitrarily well approximated by continuous feedforward neural networks with only a single internal, hidden layer and any continuous sigmoidal nonlinearity. The paper discusses approximation properties of other possible types of nonlinearities that might be implemented by artificial neural networks.

**Key words.** Neural networks, Approximation, Completeness.

### 1. Introduction

A number of diverse application areas are concerned with the representation of

# Stochastic Gradient Descent

- ▶ Stochastic gradient descent methods (SGD) adjust the weights after each example by a small value in the direction that would most reduce the error on that example.
- ▶ We will discuss here the case for one example, but this can be done for multiple examples at a time (remember mini-batch gradient descent methods).
- ▶ Remember the formula you use for the update of the weight for a deep learning network (valid for a “shallow” artificial neural network as well):

$$w_j \leftarrow w_j + \Delta w_j = w_j - \eta \frac{\partial J}{\partial w_j}$$

- ▶ We will indicate time here, since we are updating  $w_j$  at each of a series of discrete time steps  $t = 0, 1, 2, \dots$  as follows:

$$w_{j,t+1} \leftarrow w_{j,t} + \Delta w_{j,t} = w_{j,t} - \eta \frac{\partial J}{\partial w_{j,t}}$$

# Stochastic Gradient Descent

- ▶ Assuming that we have a loss function that represents the mean squared error (which we call mean square error) as follows:

$$J(\mathbf{w}) = \sum_{s \in \mathcal{S}} (U_t - \hat{v}(S_t, \mathbf{w}_t))^2$$

- ▶ We will obtain the following

$$\begin{aligned} \mathbf{w}_{t+1} &\doteq \mathbf{w}_t - \frac{1}{2} \eta \nabla [U_t - \hat{v}(S_t, \mathbf{w}_t)]^2 \\ &= \mathbf{w}_t + \eta [U_t - \hat{v}(S_t, \mathbf{w}_t)] \nabla \hat{v}(S_t, \mathbf{w}_t) \end{aligned}$$

where  $U_t$  is the target and  $\eta$  is the step-size parameter.

# Stochastic Gradient Descent

- ▶ Recall the definition of gradient:

$$\nabla f(\mathbf{w}) \doteq \left( \frac{\partial f(\mathbf{w})}{\partial w_1}, \frac{\partial f(\mathbf{w})}{\partial w_2}, \dots, \frac{\partial f(\mathbf{w})}{\partial w_d} \right)$$

- ▶ Stochastic gradient methods are “gradient descent” methods because the overall step in  $\mathbf{w}_t$  is proportional to the negative gradient of the example’s squared error.
  - ▶ Intuition: that is the direction in which the error falls more rapidly.
  - ▶ Recall: they are stochastic since they are based on samples that are randomly chosen.

# Semi-gradient One-step Sarsa Prediction

- ▶ We can extend the mathematical framework we discussed for state value functions to state-action value functions.
- ▶ In this case the target  $U_t$  is an approximation of  $q_\pi(S_t, A_t)$ .
- ▶ The general gradient-descent update for action-value prediction is

$$\mathbf{w}_{t+1} = \mathbf{w}_t + \eta[U_t - \hat{q}(S_t, A_t, \mathbf{w}_t)] \nabla \hat{q}(S_t, A_t, \mathbf{w}_t)$$

- ▶ For example, the update for the *(episodic) semi-gradient one-step Sarsa method* is the following:

$$\mathbf{w}_{t+1} \doteq \mathbf{w}_t + \eta[R_{t+1} + \gamma \hat{q}(S_{t+1}, A_{t+1}, \mathbf{w}_t) - \hat{q}(S_t, A_t, \mathbf{w}_t)] \nabla \hat{q}(S_t, A_t, \mathbf{w}_t)$$

- ▶ It is called semi-gradient because we are not really taking the “real” gradient. The “real” gradient will require to calculate the gradient of  $U_t$ .
  - ▶ Why aren't we calculating the gradient of  $U_t$ ? Essentially, the main reason is complexity. Additionally, convergence is guaranteed also in this case: for a constant policy, this method converges in the same way that TD(0) does.

# Semi-gradient One-step Sarsa Control

- ▶ But, as usual, we are interested in the problem of *control*, i.e. we are interested in finding the optimal policy.
- ▶ The method is essentially the same as for tabular methods.
- ▶ For each possible action  $a$  available in the current state  $S_t$ , we can compute  $\hat{q}(S_t, a, \mathbf{w}_t)$  and then find the greedy action using

$$A_t^* = \operatorname{argmax}_a \hat{q}(S_t, a, \mathbf{w}_t)$$

- ▶ Policy treatment is then done by changing the estimation policy to a soft approximation of the greedy policy (e.g.,  $\epsilon$ -greedy policy).
- ▶ Actions are selected according to this same policy (this is *on-policy control*).

# Semi-gradient One-step Sarsa Control

Input: a differentiable action-value function parameterisation  $\hat{q} : \mathcal{S} \times \mathcal{A} \times \mathbb{R}^d \rightarrow \mathbb{R}$

Algorithm parameters: step size  $\eta > 0$  and small  $\epsilon > 0$

Initialise value-function weights  $\mathbf{w} \in \mathbb{R}$  arbitrarily

Loop for each episode:

$S, A \leftarrow$  initial state and action of episode

Loop for each step of episode:

Take action  $A$  (e.g.,  $\epsilon$ -greedy), observe  $R, S'$

If  $S'$  is terminal:

$$\mathbf{w} \leftarrow \mathbf{w} + \eta[R - \hat{q}(S, A, \mathbf{w})] \nabla \hat{q}(S, A, \mathbf{w})$$

Go to next episode

else:

Choose  $A'$  as a function of  $\hat{q}(S', \cdot, \mathbf{w})$  (e.g.,  $\epsilon$ -greedy)

$$\mathbf{w} \leftarrow \mathbf{w} + \eta[R + \gamma \hat{q}(S', A', \mathbf{w}) - \hat{q}(S, A, \mathbf{w})] \nabla \hat{q}(S, A, \mathbf{w})$$

$S \leftarrow S'$  and  $A \leftarrow A'$



# Semi-gradient Q-Learning

- ▶ The basic procedure is similar to the “classic” Q-learning.
- ▶ The update is as follows:

$$\mathbf{w}_{t+1} = \mathbf{w}_t + \eta [R_{t+1} + \gamma \max_a \hat{q}(S_{t+1}, a, \mathbf{w}_t) - \hat{q}(S_t, A_t, \mathbf{w}_t)] \nabla \hat{q}(S_t, A_t, \mathbf{w}_t)$$

where  $\mathbf{w}_t$  is the vector of the network’s weights,  $A_t$  is the action selected at time  $t$ , and  $S_t$  and  $S_{t+1}$  are respectively the inputs to the network at time steps  $t$  and  $t + 1$ .

---

# Playing Atari with Deep Reinforcement Learning

---

Volodymyr Mnih   Koray Kavukcuoglu   David Silver   Alex Graves   Ioannis Antonoglou

Daan Wierstra   Martin Riedmiller

DeepMind Technologies

{vlad,koray,david,alex.graves,ioannis,daan,martin.riedmiller} @ deepmind.com

## Abstract

We present the first deep learning model to successfully learn control policies directly from high-dimensional sensory input using reinforcement learning. The model is a convolutional neural network, trained with a variant of Q-learning, whose input is raw pixels and whose output is a value function estimating future rewards. We apply our method to seven Atari 2600 games from the Arcade Learning Environment, with no adjustment of the architecture or learning algorithm. We find that it outperforms all previous approaches on six of the games and surpasses a human expert on three of them.

## 1 Introduction

Learning to control agents directly from high-dimensional sensory inputs like vision and speech is one of the long-standing challenges of reinforcement learning (RL). Most successful RL applications that operate on these domains have relied on hand-crafted features combined with linear value functions or policy representations. Clearly, the performance of such systems heavily relies on the

# Human-level control through deep reinforcement learning

Volodymyr Mnih<sup>1\*</sup>, Koray Kavukcuoglu<sup>1\*</sup>, David Silver<sup>1\*</sup>, Andrei A. Rusu<sup>1</sup>, Joel Veness<sup>1</sup>, Marc G. Bellemare<sup>1</sup>, Alex Graves<sup>1</sup>, Martin Riedmiller<sup>1</sup>, Andreas K. Fiedjeland<sup>1</sup>, Georg Ostrovski<sup>1</sup>, Stig Petersen<sup>1</sup>, Charles Beattie<sup>1</sup>, Amir Sadik<sup>1</sup>, Ioannis Antonoglou<sup>1</sup>, Helen King<sup>1</sup>, Dhharshan Kumaran<sup>1</sup>, Daan Wierstra<sup>1</sup>, Shane Legg<sup>1</sup> & Demis Hassabis<sup>1</sup>

The theory of reinforcement learning provides a normative account<sup>1</sup>, deeply rooted in psychological<sup>2</sup> and neuroscientific<sup>3</sup> perspectives on animal behaviour, of how agents may optimize their control of an environment. To use reinforcement learning successfully in situations approaching real-world complexity, however, agents are confronted with a difficult task: they must derive efficient representations of the environment from high-dimensional sensory inputs, and use these to generalize past experience to new situations. Remarkably, humans and other animals seem to solve this problem through a harmonious combination of reinforcement learning and hierarchical sensory processing systems<sup>4,5</sup>, the former evidenced by a wealth of neural data revealing notable parallels between the phasic signals emitted by dopaminergic neurons and temporal difference reinforcement learning algorithms<sup>3</sup>. While reinforcement learning agents have achieved some successes in a variety of domains<sup>6-8</sup>, their applicability has previously been limited to domains in which useful features can be handcrafted, or to domains with fully observed, low-dimensional state spaces. Here we use recent advances in training deep neural networks<sup>9-11</sup> to develop a novel artificial agent, termed a deep Q-network, that can learn successful policies directly from high-dimensional sensory inputs using end-to-end reinforcement learning. We tested this agent on the challenging domain of classic Atari 2600 games<sup>12</sup>. We demonstrate that the deep Q-network agent, receiving only the pixels and the game score as inputs, was able to surpass the performance of all previous algorithms and achieve a level comparable to that of a pro-

agent is to select actions in a fashion that maximizes cumulative future reward. More formally, we use a deep convolutional neural network to approximate the optimal action-value function

$$Q^*(s, a) = \max_{\pi} \mathbb{E}[r_t + \gamma r_{t+1} + \gamma^2 r_{t+2} + \dots | s_t = s, a_t = a, \pi],$$

which is the maximum sum of rewards  $r_t$  discounted by  $\gamma$  at each time-step  $t$ , achievable by a behaviour policy  $\pi = P(a|s)$ , after making an observation ( $s$ ) and taking an action ( $a$ ) (see Methods)<sup>19</sup>.

Reinforcement learning is known to be unstable or even to diverge when a nonlinear function approximator such as a neural network is used to represent the action-value (also known as  $Q$ ) function<sup>20</sup>. This instability has several causes: the correlations present in the sequence of observations, the fact that small updates to  $Q$  may significantly change the policy and therefore change the data distribution, and the correlations between the action-values ( $Q$ ) and the target values  $r + \gamma \max_{a'} Q(s', a')$ . We address these instabilities with a novel variant of Q-learning, which uses two key ideas. First, we used a biologically inspired mechanism termed experience replay<sup>21-23</sup> that randomizes over the data, thereby removing correlations in the observation sequence and smoothing over changes in the data distribution (see below for details). Second, we used an iterative update that adjusts the action-values ( $Q$ ) towards target values that are only periodically updated, thereby reducing correlations with the target.

While other stable methods exist for training neural networks in the



Credit: Wikimedia



210 x 160 pixel image frames with 128 colours at 60Hz

# Deep Q-Network (DQN)

- ▶ Semi-gradient Q-learning is at the basis of the Deep-Q-Network (DQN) used for implementing the agent. You can actually use the two terms interchangeably.
- ▶ It combines Q-learning with a deep (convolutional) multi-layer network.
- ▶ The gradient is based on back propagation.
- ▶ DQN's reward is calculated as follows:
  - ▶ +1 whenever the score of the game is increased;
  - ▶ -1 whenever the score of the game is decreased;
  - ▶ 0 otherwise.
- ▶ In other words the positive (and negative) values were capped to +1 (and -1).

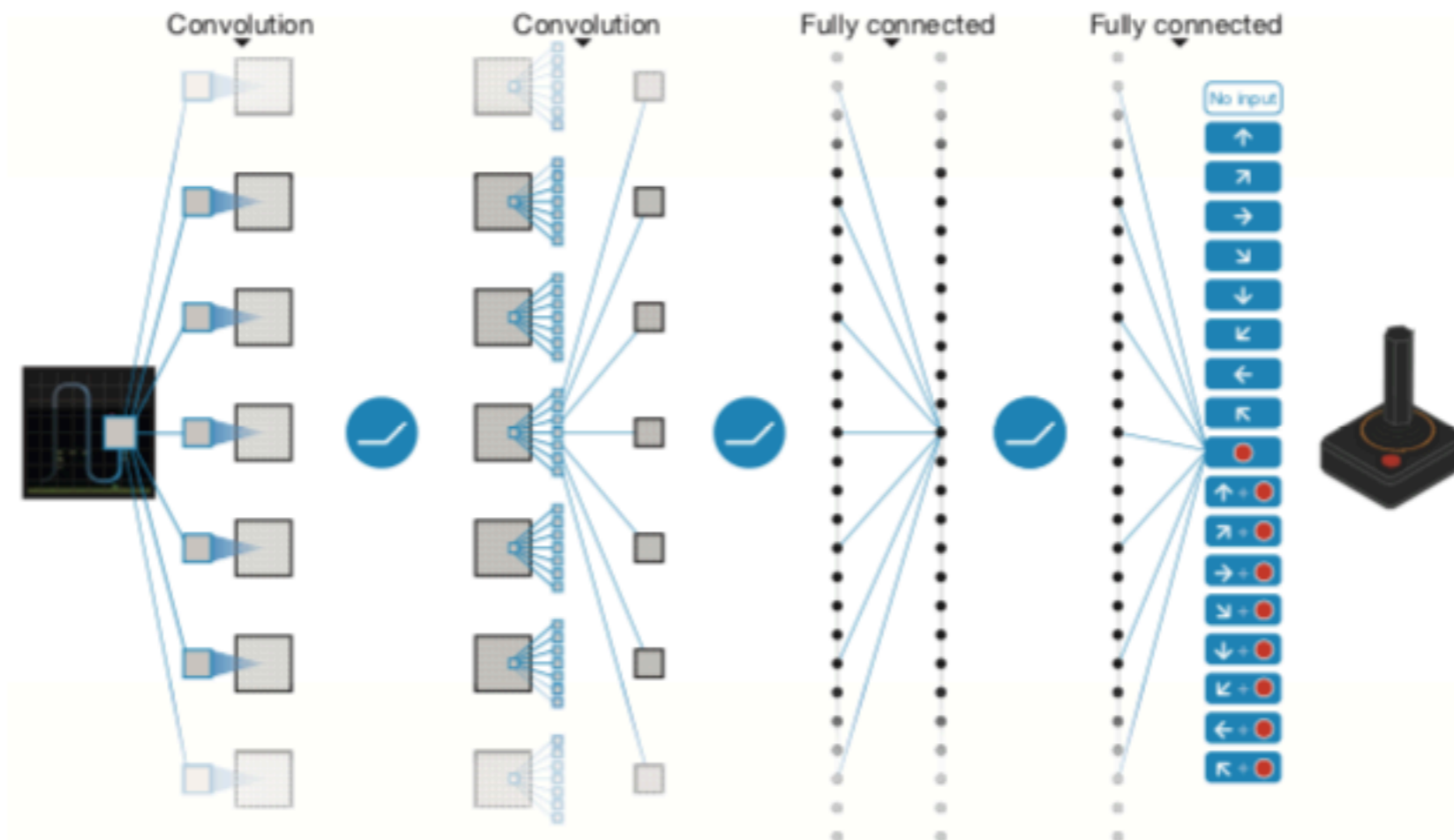
# States and Actions

- ▶ The Atari games have a resolution of 210x160 pixel image frames with 128 colours at 60 Hz.
- ▶ Data were pre-processed in order to obtain a 84x84 array of luminance values.
- ▶ Because the full states of many of the Atari games are not completely observable from the images frames and to provide more information to the agent for the decision, the authors “stacked” the four most recent frames so that the inputs of the network has dimension 84x84x4.
  - ▶ Otherwise you would have ended up with a 1-order Markov system with the current image as state (no directionality for example, etc.)

# States and Actions

- ▶ The activation levels of DQN's outputs are the estimated optimal values of the corresponding state-value pairs given the stack of images in input.
- ▶ The assignment of output units to a game's actions varied from game to game (from 4 to 18).
  - ▶ Not in all the games the output values are actually considered (but they are still in the network).





**Figure 1 | Schematic illustration of the convolutional neural network.** The details of the architecture are explained in the Methods. The input to the neural network consists of an  $84 \times 84 \times 4$  image produced by the preprocessing map  $\phi$ , followed by three convolutional layers (note: snaking blue line

symbolizes sliding of each filter across input image) and two fully connected layers with a single output for each valid action. Each hidden layer is followed by a rectifier nonlinearity (that is,  $\max(0, x)$ ).

# Deep Q-Network (DQN)

- ▶ DQN uses an  $\epsilon$ -greedy policy, with  $\epsilon$  decreasing linearly over the first million frames and remaining at a low value for the rest of the learning session.
- ▶ The network is trained using a *mini-batch stochastic gradient descent* after processing 32 images (and previous 3 for each image).
  - ▶ Changes proportional to the running average to the magnitudes of recent gradients for that weight (RSMPProp).
- ▶ A key modification to standard Q-learning is the use of *experience replay*.



<https://www.youtube.com/watch?v=0yl2wJ6F8r0>

# Experience Replay

- ▶ In DQN the authors made a series of changes to the standard basic Q-learning.
- ▶ First they used a method called *experience replay* in order to deal with the convergence problem of Q-learning.
- ▶ In Q-learning, if the updates are highly correlated, the learning process converges very slowly.
- ▶ The key idea of experience replay is to store agent's experience in a replay memory that is accessed to perform the weight updates.

# Self-Improving Reactive Agents Based On Reinforcement Learning, Planning and Teaching

LONG-JI LIN

ljl@cs.cmu.edu

*School of Computer Science, Carnegie Mellon University, Pittsburgh, Pennsylvania 15213*

**Abstract.** To date, reinforcement learning has mostly been studied solving simple learning tasks. Reinforcement learning methods that have been studied so far typically converge slowly. The purpose of this work is thus two-fold: 1) to investigate the utility of reinforcement learning in solving much more complicated learning tasks than previously studied, and 2) to investigate methods that will speed up reinforcement learning.

This paper compares eight reinforcement learning frameworks: *adaptive heuristic critic (AHC)* learning due to Sutton, *Q-learning* due to Watkins, and three extensions to both basic methods for speeding up learning. The three extensions are experience replay, learning action models for planning, and teaching. The frameworks were investigated using connectionism as an approach to generalization. To evaluate the performance of different frameworks, a dynamic environment was used as a testbed. The environment is moderately complex and nondeterministic. This paper describes these frameworks and algorithms in detail and presents empirical evaluation of the frameworks.

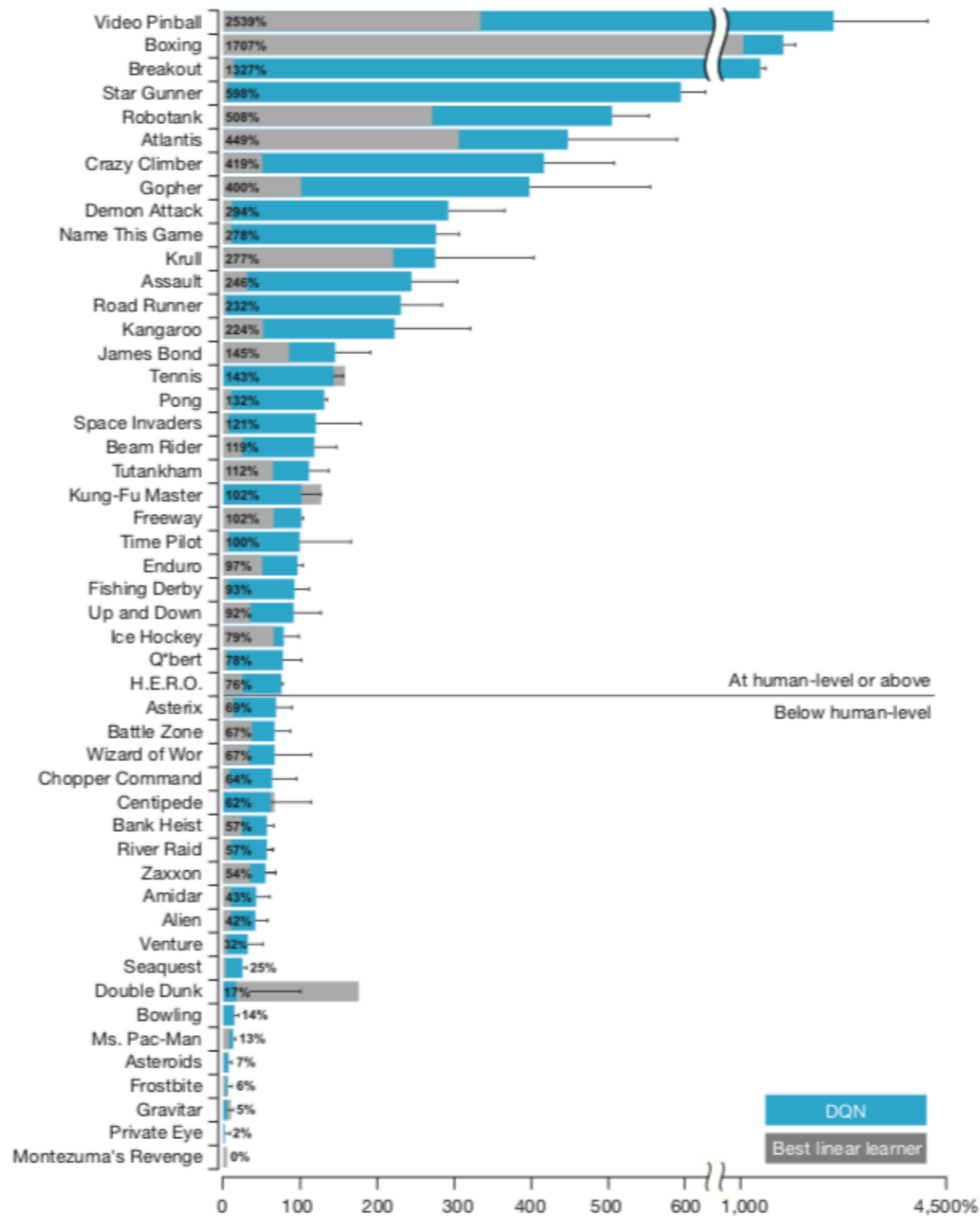
**Keywords.** Reinforcement learning, planning, teaching, connectionist networks

# Experience Replay

- ▶ The training is done through an emulator.
- ▶ After the emulator executes action  $A_t$  in a state represented by image stack  $S_t$  and returned reward  $R_{t+1}$  and the following image stack  $S_{t+1}$ , it added the tuple  $(S_t, A_t, R_{t+1}, S_{t+1})$  to the replay memory (also called replay buffer).
- ▶ The experience replay memory accumulates experiences over many plays of the same game.
- ▶ Each Q-learning update is performed by randomly sampling from the experience replay buffer.

# Experience Replay

- ▶ Instead of  $S_{t+1}$  becoming the new  $S_t$  for the next update, as it would be in the usual Q-learning, a new unconnected experience is drawn from the replay memory.
  - ▶ Important point: since Q-learning is an off-policy algorithm, it does not need to learn from “connected” trajectories.
- ▶ The random selection of uncorrelated “experiences” reduces the variance of the update. This allows Q-learning to converge more quickly.
  - ▶ Dealing with the variance of the update is a key issue for RL and it is an active area of research.



**Figure 3 | Comparison of the DQN agent with the best reinforcement learning methods<sup>15</sup> in the literature.** The performance of DQN is normalized with respect to a professional human games tester (that is, 100% level) and random play (that is, 0% level). Note that the normalized performance of DQN, expressed as a percentage, is calculated as:  $100 \times (\text{DQN score} - \text{random play score}) / (\text{human score} - \text{random play score})$ . It can be seen that DQN

outperforms competing methods (also see Extended Data Table 2) in almost all the games, and performs at a level that is broadly comparable with or superior to a professional human games tester (that is, operationalized as a level of 75% or above) in the majority of games. Audio output was disabled for both human players and agents. Error bars indicate s.d. across the 30 evaluation episodes, starting with different initial conditions.



# References

- ▶ Chapters 9 and 16 of Barto and Sutton. Introduction to Reinforcement Learning. Second Edition. MIT Press. 2018.